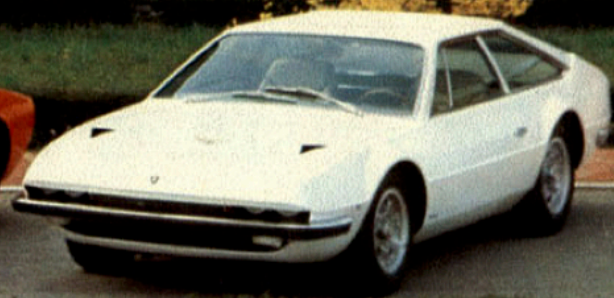


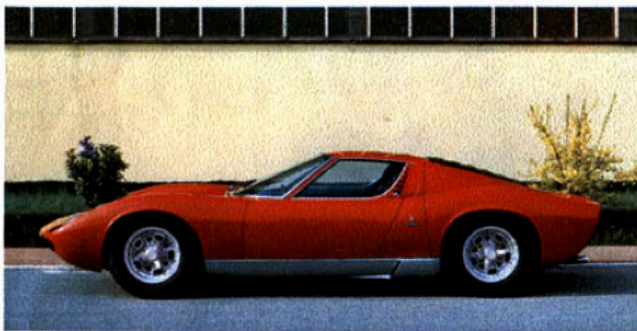
lamborghini



lamborghini



miura



LAMBORGHINI MIURA P 400 S

Bodywork

2 seater Berlinetta (Bertone)
Monocoque steel construction
Front and rear dumper hoods
Spare wheel and batterie housed in the front boot
Rear trunk capacity: 140 liter (8.5 cu.in.)
Retractable halogen headlights
Electrically operated windows
Laminated windscreen - tinted glassess

Engine, transmission

V 12 (60°) inboard transverse rear engine in unit with differential and gearbox
Capacity 3929 cm³ (82 x 62 mm) or 240 cu.in. (3.22 x 2.40 in.)
Compression ratio 10,7 : 1
Maximum power: 370 bhp at 7700 rpm
Maximum torque: 39,5 mkg (289 ft.lbs.) at 5500 rpm
Light alloy cylinderblock and heads
7 crankshaft bearings
2 x 2 overhead camshafts
Single ignition system operated by 2 x 1 distributors
Cooling system: cross - flow radiator and twin electric fans
Lamborghini 5 speed + reverse all syncromesh gearbox; constant velocity final drive shafts
Electrical equipment: 12 V - batterie 72 Ah - alternator 450 W

Chassis

All-steel bodywork of monocoque construction
Independent front and rear suspension consisting of double transverse wishbones with coil springs, telescopic Koni dampers and anti-roll bar front and rear
Girling ventilated disc braking on all four wheels operated by two vacuum servo-units with independent circuits to front and rear brakes: rear pressure rise valve
Magnesium wheels 7" x 15"
Low profile tyres GR/70-VR 15

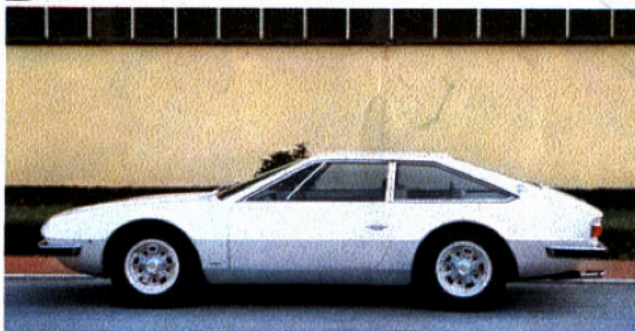
Dimensions, weight

Wheelbase: 2504 mm (98.5")
Track front and rear: 1412 mm (55.6")
Length 4390 mm (172.8")
Width: 1780 mm (70")
Height: 1100 mm (43.3")
Curb weight (with oil and coolant): 1245 kg (2744 lbs)

Performances

Top speed: over 280 km/h (174 mph.)
Acceleration on 1 standing km: 24.2"

jarama



LAMBORGHINI JARAMA 400 GT 2+2

Bodywork

2 + 2 seater Coupé (Bertone styling)
Sumptuous leather upholstery and safety padding
Twin halogen lights
Electrically operated windows - tinted glasses
Laminated windscreen - Electrically heated rear window
Rear trunk capacity 15,2 cu.in. - Inside luggage van with reclined rear back rest

Engine, transmission

V 12 cylinder (60°)
Capacity 3929 cc (82 x 62 mm) or 240 cu.in. (3.22 x 2.40 in.)
Compression ratio 10,7 : 1
Maximum power 350 bhp (DIN) at 7500 rpm
Maximum torque 40 mkg (290 ft. lbs) (DIN) at 5500 rpm
Light alloy cylinder block and heads
7 crankshaft bearings
2 x 2 overhead camshafts
Single ignition system by 2 x 1 distributors
6 horizontal twin carburetters Weber 40 DCOE 20-21
Pressurised cooling system: vertical-flow radiator and twin electric fans
Lamborghini 5 speed all syncromesh gearbox. Constant velocity final drive shafts
Electrical equipment 12 V - battery 72 Ah - alternator 550 W

Body

All-steel body of integral construction
Independent front and rear suspension consisting of double transverse wishbones with coil springs, telescopic Koni dampers, and anti-roll bars
Girling ventilated disc braking on all four wheels operated by two vacuum servo-units with independent circuits to front and rear brakes
Magnesium wheels 7" x 15"
Low profile tyres GR/70 - VR 15

Principal dimensions

Wheelbase 2380 mm (93.6 in.)
Track front and rear 1490 mm (58.6 in.)
Length 4485 mm (176.5 in.)
Width 1820 mm (71.6 in.)
Height 1190 mm (46.8 in.)
Dry weight 1450 kg (3196 lbs)

Performances

Top speed: over 260 km/h (162 mph)
Acceleration on 1 standing km: 25 sec.

espada



LAMBORGHINI ESPADA 400 GT

Bodywork

4 seater Coupé (Bertone)
Sumptuous leather upholstery and safety padding
Twin halogen lights
Electrically operated windows - tinted glasses
Laminated windscreen - electrically heated rear window
Trunk capacity 20,1 cu.in. - full air conditioning

Engine, transmission

V 12 cylinder (60°)
Capacity 3929 cc (82 x 62 mm) or 240 cu.in. (3.22 x 2.40 in.)
Compression ratio 10,7 : 1
Maximum power 350 bhp (DIN) at 7500 rpm
Maximum torque 40 mkg (290 ft. lbs.) (DIN) at 5500 rpm
Light alloy cylinder-block and heads
7 crankshaft bearings
2 x 2 overhead camshafts
Single ignition system by 1 distributor
6 horizontal twin carburetters Weber 40 DCOE 20-21
Pressurised cooling system: vertical-flow radiator and twin electric fans
Lamborghini 5 speed all syncromesh gearbox. Constant velocity final drive shafts
Electrical equipment 12 V - battery 72 Ah - alternator 550 W

Body

All-steel body of integral construction
Independent front and rear suspension consisting of double transverse wishbones with coil springs, telescopic Koni dampers, and anti-roll bars
Girling ventilated disc braking on all four wheels operated by 2 vacuum servo-units with independent circuits to front and rear brakes
Magnesium wheels 7" x 15"
Tyres: Pirelli Cinturato HS 205 VR 15

Principal dimensions

Wheel base 2650 mm (104.3 in.)
Tranck front and rear 1490 mm (58.6 in.)
Length 4738 mm (186.5 in.)
Width 1860 mm (73.4 in.)
Height 1185 mm (46.6 in.)
Dry weight 1635 kg (3605 lbs.)

Performances

Top speed: 250 km/h (155 mph)
Acceleration on 1 standing km.: 26 sec.

Lamborghini

AUTOMOBILI FERRUCCIO LAMBORGHINI S.p.A.

40019 S. AGATA BOLOGNESE (BO)

ITALIA

TEL. (051) 829171-2-3



**Agip SINT 2000 with a synthetic component
has brought about a revolution in the lubricants sector**

The synthetic component is a high-grade oil with a high natural viscosity index which makes it possible to reduce the additive content, thus eliminating those non-lubricating substances which tend to deteriorate with use.

Agip SINT 2000 is revolutionary because of its high degree of oiliness which makes it adhere firmly to moving surfaces and ensures immediate safety lubrication at the critical moment of starting up before the oil begins to circulate.

In addition, all the other properties of the best conventional oils (super, multigrade and seasonal) are enhanced in Agip SINT 2000, thus making it particularly suitable for high-efficiency engines such as Lamborghini's Miura S, Jarama and Espada.

Agip SINT 2000 fights to protect your engine and always wins

AGIP
SINT
2000

